



TATSAN STEEL CONSTRUCTION MANUFACTURING and ASSAMBLY

It has been providing heavy steel construction manufacturing and assembly services since 1976. An average of 750 tons of production can be done monthly in a 15000 m2 closed area.

OUR SERVICES:

- Steel Construction Manufacturing and Installation Works Industrial Assembly of Technological Equipment and Machines
- Piping Manufacturing and Installation
- Industrial Tank Manufacturing and Installation Facility Infrastructure Excavation and Construction





TAT METAL Pickling Line 1 - 2006
Steel Construction Manufacturing and Assembly



TPAO Mud Plant - 2011
Steel Construction Manufacturing and Assembly + Piping



TAT METAL Continuous Galvanizing Line 1 2009
Steel Construction Manufacturing and Assembly + mechanical equipment assembly+ Piping



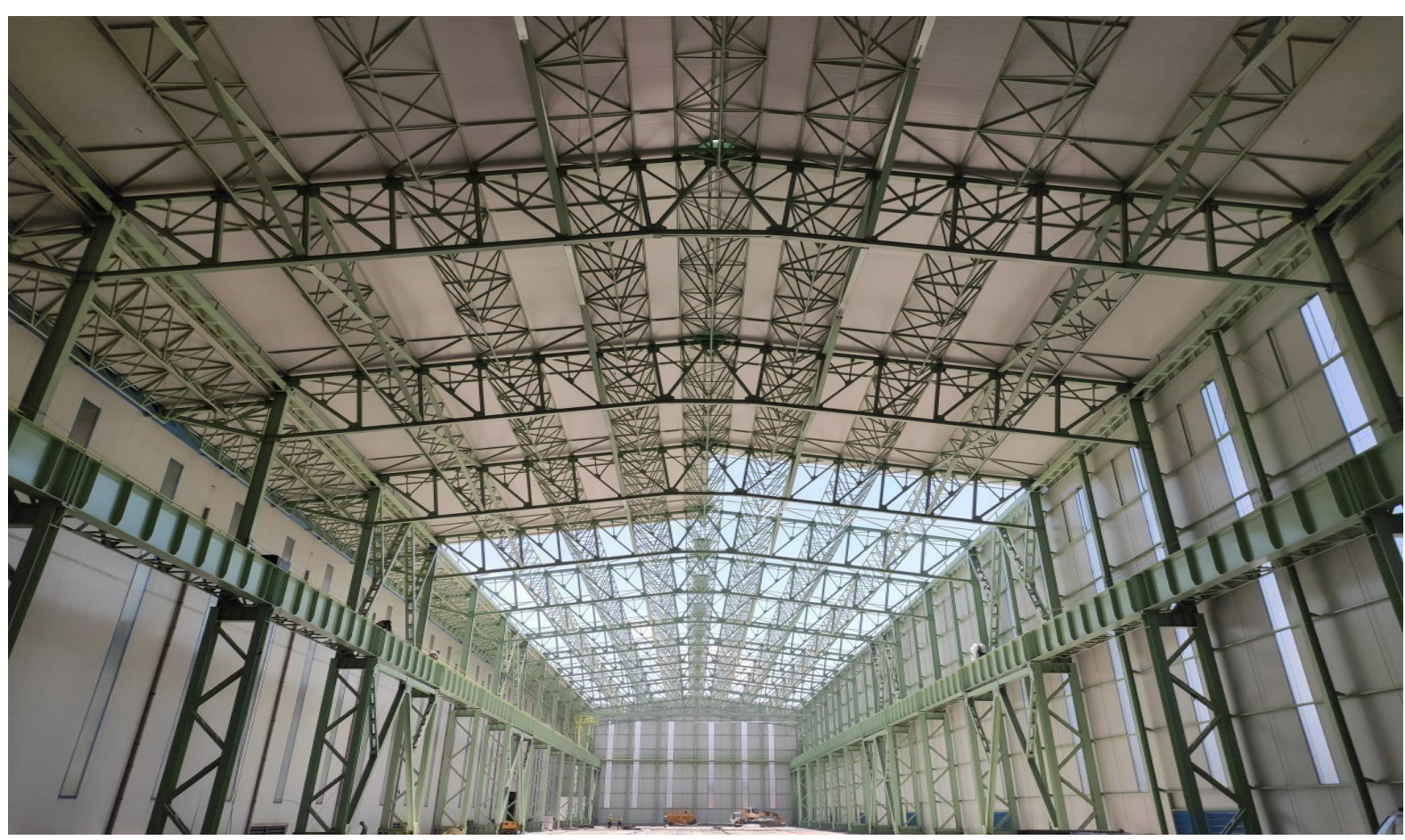
DELGO MINING LTD. / SUDAN -2016
Tank Manufacturing and Assembly+ Piping



TAT METAL Continuous Pickling Line 2018

TAT METAL Pickling Line Tandem Cold Mill 2018-19

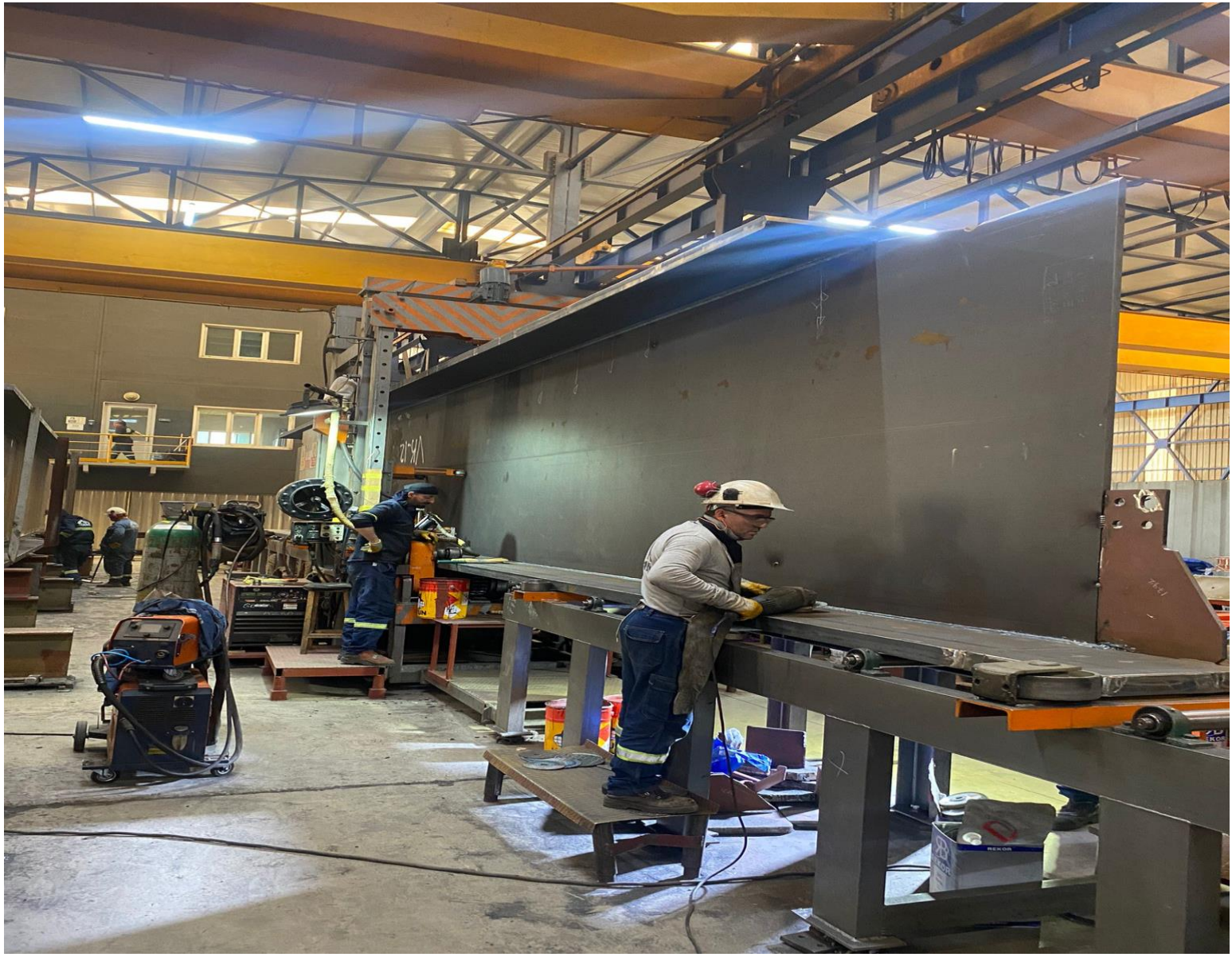
Manufacturing and Assembly+ Piping + Mechanical Equipment Assembly (3500ton)



ERDEMİR T.A.Ş 3. HANGAR – 2020 (1000 ton)



ÇINARBORU A.Ş HANGAR -2020 (500 ton)



MI NOTE 10 LITE
TATSAN_ERDEMİR

2020/7/11 09:39

**ERDEMİR A.Ş -2020
HI CRANE MANUFACTURING**



CLOOS ROBOT / ARTIFICIAL INTELLIGENCE

WELDING MACHINE

(The first and only in Türkiye. It provides rapid solutions for all kinds of mass production.)



TAT METAL Continuous Galvanizing Line 3 (5500 ton) 2023-2024

Manufacturing and Assembly+ Piping + Mechanical Equipment Assembly



ÇINARBORU-SMS ARP Line (650 ton) 2023-2024

Steel,Piping and mechanical Equipment Manufacturing



ÇINARBORU-SMS ARP Line (650 ton) 2023-2024

Steel,Piping and mechanical Equipment Assembly

SOME OF OUR REFERENCES

